



Bob's Space Racers® Inc. © 2017  
427 15th Street,  
Daytona Beach, Florida 32117  
Phone - (386) 677-0761  
Fax - (386) 677-0794  
E-mail: tech@bobsspacracers.com



# Operator's Manual

# Table of Contents

---

## I. STINKY FEET DUCK OPERATOR’S MANUAL

A.	Introduction .....	iii
A.1:	Overview .....	iii
A.2:	Use only a GROUNDED AC receptacle. ....	iii
A.3:	Maintenance for the Games .....	iii
A.4:	Average Power Requirements .....	iii
A.5:	Check Packing List .....	iii
A.6:	Specifications .....	iv
B.	Setup .....	v
Chapter 1 :	Operator’s Procedure .....	1-1
1.1:	Object of Game .....	1-1
1.2:	How to Start a game .....	1-1
1.3:	How to Play Walkthrough .....	1-2
Chapter 2 :	Maintenance .....	2-1
2.1:	Maintenance Recommendations .....	2-1
2.2:	Periodic Maintenance .....	2-1
Chapter 3 :	Maintenance Tip .....	3-1
3.1	Maintenance Introduction .....	3-1
3.2:	Unclogging a Brass Tip of a Water Gun .....	3-1
Chapter 4 :	Draining the Tank .....	4-1
4.1	Automatic Draining .....	4-1
4.2	Clean The Filter .....	4-1
4.3	Manual Draining .....	4-2
4.4	Winterizing the Game & Pump .....	4-2
Chapter 5 :	Troubleshooting .....	5-1
5.1:	Troubleshooting Philosophy .....	5-1
Chapter 6 :	Option Settings .....	6-1
Chapter 7 :	Service .....	7-1
7.1	Calling for Service .....	7-1
Chapter 8 :	Family Entertainment Center (FEC) Options .....	8-1
8.1	Calling for Service .....	8-1
Appendix A :	Policies .....	A-1
A.1:	Service Policy .....	A-1
A.2:	Advance Replacement Policy .....	A-1
Appendix B :	Warranty .....	B-1
B.1:	Game warranty .....	B-1
B.2:	Advanced replacement item(s) shipping requirements .....	B-2
Appendix C :	Federal Communications Commission statement .....	C-1
Appendix D :	Parts .....	D-1
Appendix E :	Revision .....	E-1

# A. Introduction

---

## A.1 Overview

This manual contains information about Stinky Feet™ version Duck, Kid, and FEC. The manual contains: Information on how to setup, scoring, maintenance, water pumps, some tech tips, troubleshooting, the options, and service. The appendixes A-D contain information about policies, warranty, the FCC statement, and the revision status.

## A.2 Use only a GROUNDED AC Receptacle.

Failure to do so could result in improper operation or damage to the game and could void your warranty. If you are unsure that your AC receptacle is properly grounded, have a qualified electrician perform this check for you.

## A.3 Maintenance for the games

Always be sure power to the game is turned off when doing even routine maintenance. Otherwise moving parts could activate unexpectedly and cause injury.

## A.4 Average Power Requirements. *Amperage & Watts will vary depending on game.*

		<b>Voltage</b>	<b>Amperage</b>	<b>Watts</b>	<b>Hertz</b>	<b>Service Power Recommendation</b>
A.4.1	Domestic Game Power:	110V ± 10V	~ 8.0 Amps	~ 960 W	at 60Hz	20 Amps
A.4.2	Domestic Water Pump Power:	220V ± 10V	~ 9.6 Amps	~ 2112 W	at 60Hz	20 Amps
A.4.3	Domestic Lights Power:	110V ± 10V	~ 5.0 Amps	~ 600 W	at 60Hz	15 Amps
A.4.4	Export Game Power:	220V ± 10V	~ 5.0 Amps	~ 1100 W	at 50/60Hz	10 Amps
A.4.5	Export Water Pump Power:	220V ± 10V	~ 9.6 Amps	~ 2112 W	at 50/60Hz	15 Amps
A.4.6	Export Lights Power:	220V ± 10V	~ 5.0 Amps	~ 600 W	at 50/60Hz	10 Amps

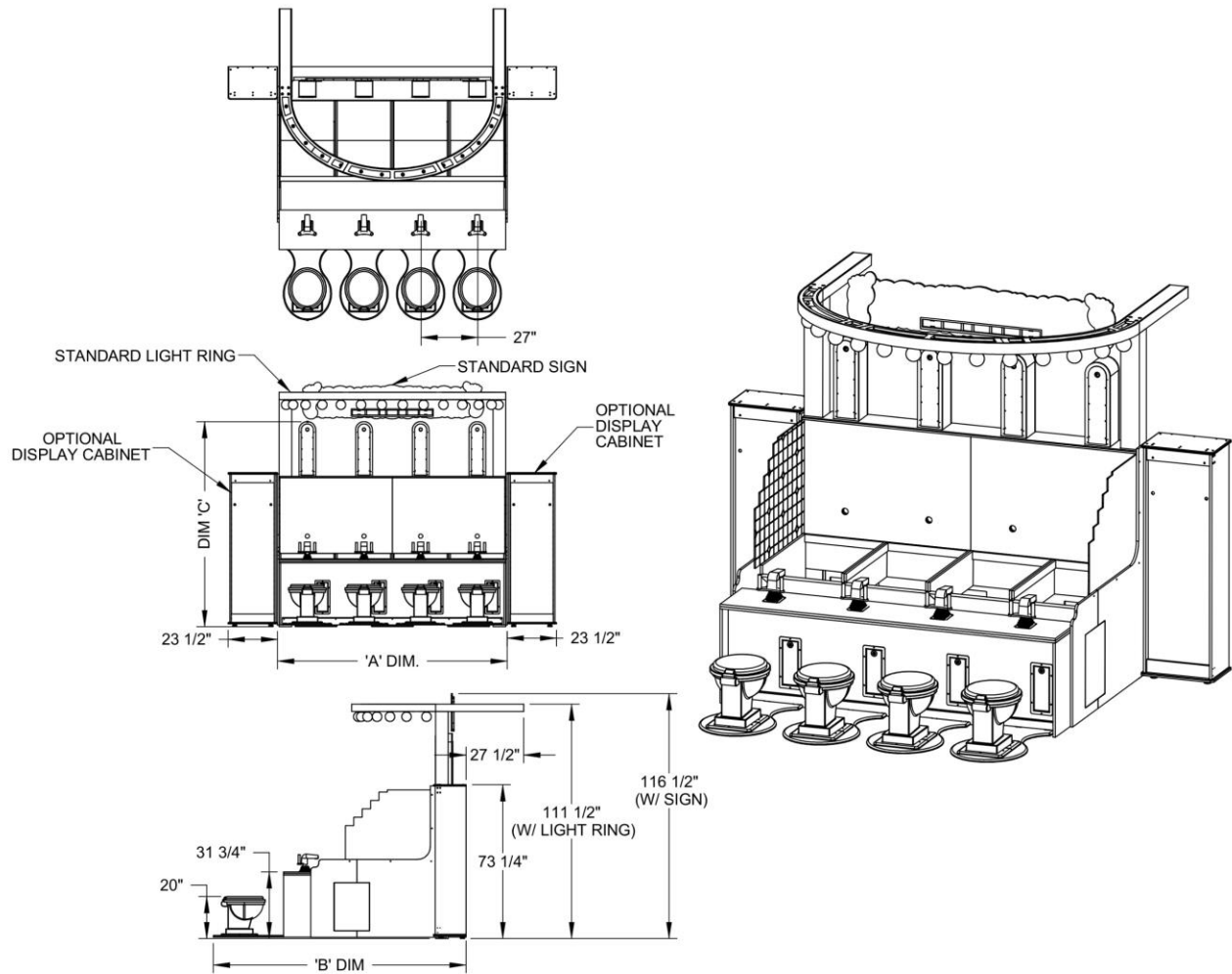
### **WARNING!**

Ensure that this product is compatible with your facilities power supply, voltage and frequency requirement. A label describing Electrical Specifications is attached to the product. Non-compliance with the Electrical Specifications can cause a fire and electric shock. Ensure the game is level before applying power.

## A.5 Check Packing List

Check the packing list prior to installation. Verify that all parts that have been received and are in good condition.

## A.6 Game Specifications



## B. Setup

---

### B.1 The initial setup up of the game.

B.1.1 Initial setup involves creating a location for the game.

B.1.1.1 Ensure the game is level. Use Shims as necessary, see *Figure B.1*.



Figure B.1

B.1.1.2 Make necessary game connections.

B.1.2 Hook up the power to the game.

B.1.3 Close drain valves. See *Figure B.2* as an illustration.

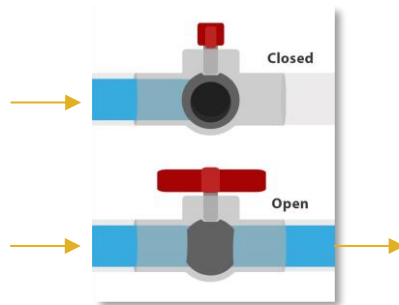


Figure B.2

B.1.4 Fill the front tank with water.

B.1.5 Priming the Pump.

B.1.5.1 Priming a pump requires at least  $\frac{3}{4}$  of a gallon of water.

B.1.5.2 Unscrew the top bolt. See *Figure B.3*.

B.1.5.3 Use a funnel and fill the pump.

B.1.5.4 Screw in the top bolt finger tight, then finish by using a wrench to tighten fully.

B.1.5.4 This is the completion of priming the pump.



Figure B.3

B.1.5 Test each unit separately on the game. See chapter one.

B.1.1.1 Ensure all players work properly.

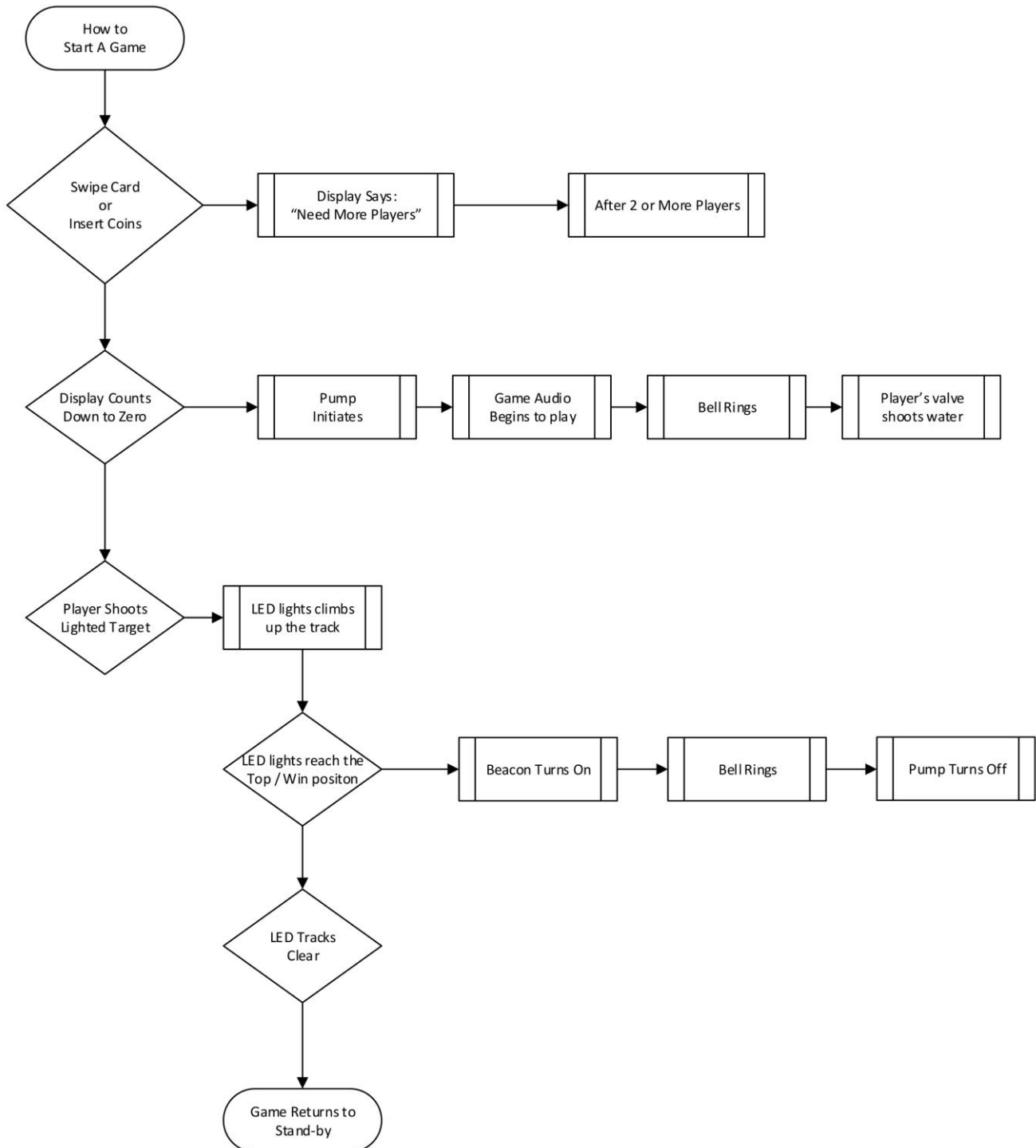
*Note: If there is a problem, call BSR's tech support: 386-677-0761.*

# Chapter 1: Operator's Procedures

## 1.1 Object of Game.

Shoot lighted target with water gun. This will advance the toy upwards. Players shoot the target until the toy reaches the win position.

## 1.2 Operate / Race



# Chapter 2: Maintenance

---

## 2.1 Maintenance Recommendations

- 2.1.1 Clean the outer surfaces of the game with a commercial spray type cleaner.
- 2.1.2 **DO NOT USE** a glass cleaner or commercial chemical sprays on vinyl graphics.
- 2.1.3 **DO USE** a good quality spray type furniture polish to keep the game looking good.
- 2.1.4 Vacuum the inside of the game occasionally to help keep the dust and ticket debris off of all the electronics.

## 2.2 Periodic Maintenance *Never Add Lime-Away®, bleach, or any other corrosives to cleaning solutions.*

### 2.2.1 Daily Cleaning

- 2.2.1.1 Cleaning Formica (*Lacquer Thinner, Clean-On-The-Go Glass, De-Solve-It®, Old English®, Baby oil*)
- 2.2.1.2 Cleaning Glass (*Windex®, Clean-On-The-Go Glass, Lacquer Thinner, Brilliantize®*)
- 2.2.1.3 Cleaning Stainless Steel (*Mineral Spirits, Clean-On-The-Go Glass, Soft Scrub®, Old English®, Baby oil*)
- 2.2.1.4 Cleaning Plexiglas® (*Mineral Spirits, De-Solve-it®, Brilliantize®, 3812S Enamel Reducer*)
- 2.2.1.5 Cleaning Other Metals (*Mineral Spirits, Soft Scrub®, Old English®, Baby oil*)

### 2.2.2 Daily Check

- 2.2.2.1 Check all individual unit push buttons.
- 2.2.2.2 Check all ID lights.
- 2.2.2.3 Check to see that each unit turns on and wins when played by shooting each gun.
- 2.2.2.4 Check all lights.
- 2.2.2.5 Check all microphone and sound equipment. *Working and physical condition.*
- 2.2.2.6 Check Accounting system. *See Chapter 6 for more information.*
- 2.2.2.7 Check each target switch for activation and proper motion.
- 2.2.2.8 Check to see that all guns work properly.

### 2.2.3 Daily Pump Maintenance

- 2.2.3.1 Check water level.
  - 2.2.3.1.1 Water level should be up to the bottom of the water tank screens.  
*Approximately 3 to 4 inches.*
- 2.2.3.2 Remove the water tank screen and strainer.
- 2.2.3.3 Remove all debris from the water tank screens, strainer, and filter.
- 2.2.3.4 Check the suction.
- 2.2.3.5 Check for any water leaks.

### 2.2.4 Weekly Maintenance for Water Games. *Includes daily maintenance.*

- 2.2.4.1 Drain all water.
- 2.2.4.2 Clean water tank and all screens.
- 2.2.4.3 Clean pump filter.
- 2.2.4.4 Fill tank with clean water. *Add two ounces of BSR recommended water conditioner.*

### 2.2.5 Monthly. *Includes daily and weekly maintenance.*

- 2.2.5.1 Rotate water pumps.

### 2.2.6 Yearly. *Includes daily, weekly, and monthly maintenance.*

- 2.2.6.1 Run the game in bally mode. *Lubricate sprockets as needed.*



# Chapter 3: Maintenance Tip

## 3.1 Maintenance Introduction

3.1.1 Section 3.2 is the procedure how to unclog the water gun tip.

*Note: If at any time you require more assistance, please do not hesitate to call tech support: 386-677-0761.*

## 3.2 Unclogging a brass tip of a water gun.

### Introduction

This easy step-by-step process will show how to unclog the brass tip of a water gun.



Figure 1.1

### Tools Needed

- 3/8" Open-Ended Wrench
- Drill Bit #59 or BSR Gun tip Cleaner. *BSR Part # M0006104*
- Small Bucket

*NOTE: Using anything other than the suggested tools could cause unwanted damage to the Brass Gun Tip and is not recommended.*

### Step 1 – Removing Gun Tip

- Using the 3/8" Wrench, remove the brass gun tip by turning the brass gun tip counter-clockwise until the brass gun tip and the rubber washer, *BSR Part # M0006308*, come off of the end of the gun.

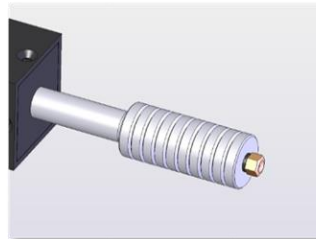
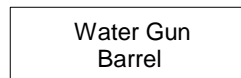


Figure 1.2

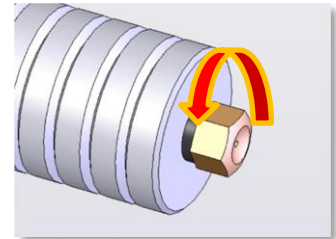
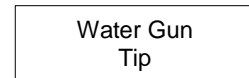


Figure 1.3

*Note: Do not misplace the fiber washer, it is needed to form a good seal around the gun tip and prevent water leaking from the gun tip.*

### Step 2 – Unclogging Brass Tip

- Carefully insert drill bit into brass gun tip.
- It may be necessary to blow air through gun tip to remove any remaining debris.

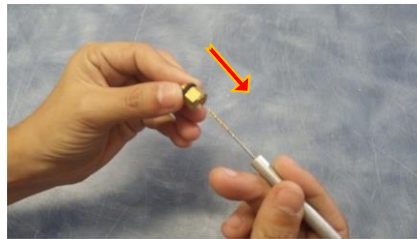
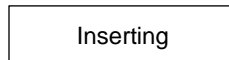


Figure 1.4

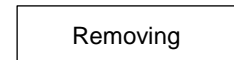


Figure 1.5

*Note: To stop the race press the STOP push button and then press and hold the RESET button to deactivate the active unit(s).*

### Step 3 – Clearing the Line

- Use a small bucket or pan to catch any water that comes from the water gun. With tip removed from gun start the race. This will flush out any debris from the water line.
- Re-install gun tip and washer.

*Note: After clearing the line just re-install the gun tip. Do Not Overtighten the Brass Gun Tip!*



# Chapter 4: Draining the Tank

## 4.1 Automatic Draining *Procedure requires power and uses the existing pump.*

4.1.1 Depending on the system, there might be a slight difference in the output valve. *Figure 1.1* and *Figure 1.2* will be similar to your setup.

4.1.2 Open the valve to allow water to exit the system.

4.1.3 To initiate the ©2017 automatic draining system, press the pedal that says, “FOR DRAINING WATER TANK **ONLY PUSH** TO START PUMP TO DRAIN TANK.” See *Figure 1.3*

4.1.4 If the game is indoors, it is recommended to use a 5-gallon bucket and the supplied drain hose, to empty the system bucket by bucket. Example: *Figure 1.4*. Push the pedal and fill up the bucket to a manageable level, then release the pedal. This will stop water flow. Empty the bucket and repeat until tank is empty.



Figure 1.1



Figure 1.2



Figure 1.3



Figure 1.4

## 4.2 Clean The Filter

4.2.1 The filter valve is normally closed see *Figure 1.5*.

4.2.2 Rotate valve counter-clockwise to open valve, see *Figure 1.6*.

*Note: See Figure 1.7, This is the latest version of the filtration assembly. There is a hose attached to the bottom of the filter for easy removal of debris into a container of your choosing.*

4.2.3 Press the “FOR DRAINING WATER TANK **ONLY PUSH** Switch/Pedal TO START PUMP TO DRAIN TANK”, *Figure 1.3*, until the filter is clear and clean.

*Note: If filter still appears to be dirty, it is recommended to unscrew filter bowl and wash the filter manually. While cleaning the filter, inspect the O-rings and filter to ensure they are in good condition. When re-assembling, check to see that the filter is seated properly as well as the O-rings. Do not over tighten filter bowl. Once snug a quarter turn more will be sufficient.*

4.2.4 When the filter has been cleaned, remember to close the filter valve before running the game.



Figure 1.5



Figure 1.6

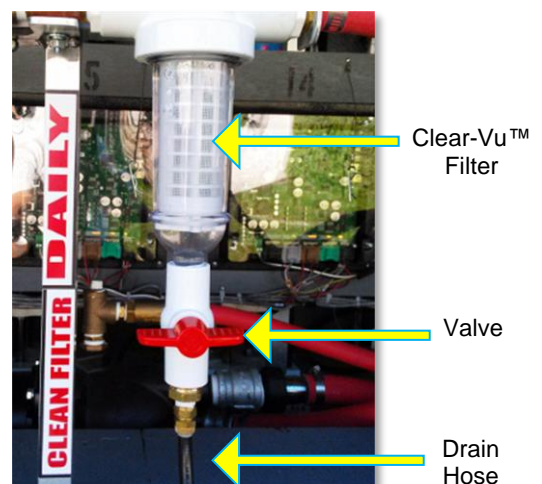


Figure 1.7

### 4.3 Manual Draining *Procedure uses gravity.*

4.3.1 The secondary drain uses gravity. The location may vary based on the model. The below, *Figure 1.9* is a close up. *Figure 1.8* is from a different model, but gives an idea where it is located.

4.3.1 To open the valve turn the red handle 90 degrees, either to the left or right.

*Note: The manual drain does not include a hose, but maybe necessary to add one to control where the water drains.*

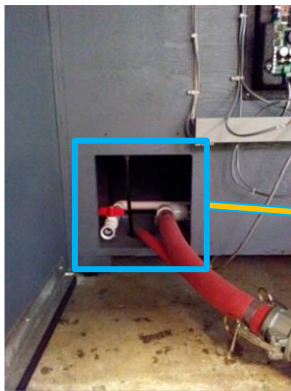


Figure 1.8

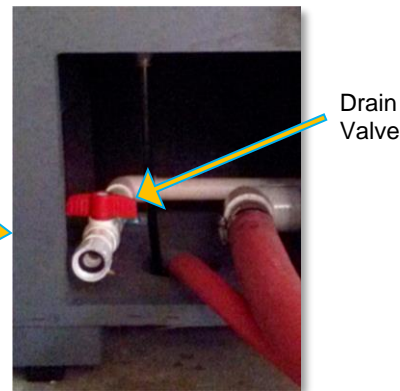


Figure 1.9

### 4.4 Winterizing the Game & Pump

4.4.1 Complete steps 4.1 or 4.3 to remove water.

4.4.2 Unplug the pump and then put the game into, Forward, this will open all water valves. If the guns have a button or trigger, use a zip-tie, tape or rubber band to hold the trigger. Next, open up the drain on the pump and allow to drain. Open up the filters and remove water. Remove filter and re-seal bowl or canister, make sure to seat the O-rings properly. *Note: Once winterizing is complete, re-install a clean filter.*

4.4.3 Connect air hose to the pump's drain plug port, then blow no more than 50 psi back through the pump. This will blow the water out of lines and guns. Allow to run until there is no visual mist of water being pushed through the guns. Repeat 4.4.2 and 4.4.3 if the system has a second pump.

*Note: This may not remove all the water trapped inside the jet area of the pump. Proceed to 1.3.4 for winterizing the pump.*

4.4.4. To winterize the pump(s), screw the bottom drain plug or cap back in. Then fill the front cavity with RV antifreeze or 99.9% **Food Grade** propylene glycol and then seal it up. *Note: Remember to drain the RV antifreeze or food grade propylene glycol before opening the following season. Cycle water or flush fresh water through the system.*

*Note: The jet is a closed off to the rest of the pump. Meaning if there is water inside and freezes it could rupture or crack the casing.*

*Figure 1.11 – 1.13 are a visual of where water can be trapped and if not removed could damage the pump.*



Figure 1.10

Drain Plug or Cap

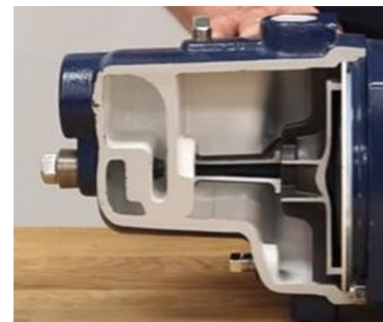


Figure 1.11

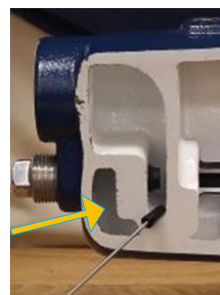


Figure 1.12

Freeze Points

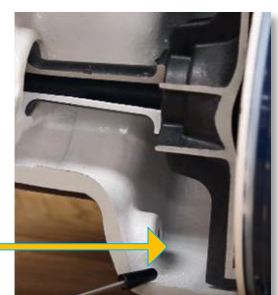


Figure 1.13

Freeze Points

# Chapter 5: Troubleshooting

## 5.1 Troubleshooting Philosophy. *When troubleshooting any product, certain general guidelines should be followed.*

- 5.1.1 Always check to be sure that your game power is turned on. Ensure that all of the fuses in the game are functional and that the AC voltage is in the proper operating range for your game.
- 5.1.2 Ensure that all of the game harnessing is plugged in properly and that all of the pins are firmly seated in the connectors. It is always possible that a harness can be damaged by rough shipping or moving.
- 5.1.3 Inspect game harnessing to be sure that none of the wires have become or are damaged. Utilize a handheld multi-meter, and check continuity of the wires to make sure they are not broken.
- 5.1.4 Inspect for obvious damage to the P.C. Boards or electrical components.
- 5.1.5 If you have multiple similar games or multiple parts for a game, swap or exchange the parts to see if the problem goes away or moves to another location. You can quickly eliminate certain parts as being the problem within the game.
- 5.1.6 When changing electronic or electrical components, ALWAYS turn off all external power and unplug the game.
- 5.1.7 Ensure that all power supplies are delivering the specified voltages to the P.C. Boards and components as shown in the manual.

Symptom	Possible Problem	Solution
Sound Problems -No sound -Low Sound -Intermittent Sound	Low Volume Faulty speaker harnessing Faulty speaker Faulty sound board or sound board harnessing Faulty Main P.C. Board and or BSR Sound unit	Check Volume Control and adjust as necessary Check connections and/or repair harnessing Check and/or replace speaker Check connections or Replace Sound Board Check and/or repair or replace Main P.C. Board or BSR Sound unit
Game will not start or pump will not run	Game power off Main fuse blown Faulty solid state relay Faulty pump Power Supply problem or failure Faulty P.C. board or component	Check on/off switch and power cord Check and/or replace fuse as necessary Check and replace solid state relay Check and replace pump Check Power Supply output and connections Repair and/or replace main P.C. board
Game stops or is stopped with nothing displayed	The power connector is disconnected. Possible faulty connection or short circuit.	Reconnect the connector securely. Check all circuitry for faulty connections or short circuits.
Water stream crooked or weak	Pressure regulator Clogged gun tip Partially clogged filter Kinked hose Low water level or no water	Adjust pressure regulator Check and clean gun tip Check filter and clean if necessary Check all hoses Check water level and fill if necessary
Score won't increase	Faulty target switch Faulty or disconnected harness Faulty IO board	Check target switch Check and repair harnessing Repair or replace IO board
Water not coming out of gun	Clogged gun tip Kinked hose Low water level or no water Faulty solenoid valve Faulty Pump Faulty Main P.C. board	Clean tip with paper clip Check hoses for kinks Check water level and fill if necessary Check or replace solenoid valve Repair or replace pump Repair or replace Main P.C. Board
Programming button and counters	Disconnected programming Panel harness	Check connector Check connector

# Chapter 6: Options Settings – BSR 3000 Electronics

Revision Approved  
January 3, 2017

BSR Stinky Feet™

Program: WTR3K.V20

FEC

Name	Description	Default	Min	Max
UNIT ID NUMBER	Each Unit(s) ID assignment. When Programmed: <b>0 = Master / 33 = Factory Reset Default ID Number</b>	0	0	32
# of Players	Set to the total number of players in a game. << <b>FEC only supports up to 12-players</b> >>		1	32
Game Volume	The decibel level of the output audio	8	1	10
Bell Volume	The decibel level of the bell audio	10	0	10
Bell Time	The amount of time the bell is active. << <b>In Seconds</b> >>	2	2	6
Win Lite Time	The amount of time the beacon is active. << <b>In Seconds</b> >>	10	1	12
Unused	NOT USED FOR GAME << Leave at Default Value >>	1	0	1
Unused	NOT USED FOR GAME << Leave at Default Value >>	2	1	3
Unused	NOT USED FOR GAME << Leave at Default Value >>	2	1	3
Win Score	The score to reach to win the race. <b>Increments by 10 points.</b>	150	50	300
Attract Mode	0 = <b>Just play audio</b>   1 = <b>Turn on shower heads with audio</b>	1	0	1
Attract Interval	The time it takes from the game is turned on until the start of attract mode. << <b>In Minutes</b> >>	3	0	30
Cost Per Play	Dollar amount displayed on Dollar Sign and used for accounting.	1	1	5
Game Time Limit	When a game starts and if inactive will run for a set time. << <b>In Seconds</b> >>   <b>Factory Default is 90 seconds</b>	90	0	180
Game Difficulty	The Target speed and random setting. Oscillating: 0 = <b>easy</b>   1 = <b>medium</b>   2 = <b>hard</b> ; Random: 3 = <b>easy</b>   4 = <b>medium</b>   5 = <b>hard</b>	1	0	5
Money Prompt	Displays the different type of initialization options. 0 = <b>Swipe Card</b>   1 = <b>Insert Coin</b>	0	0	1
Stack Credits	Allows or denies the ability to coin up more than once per race. 0 = <b>No Stacking</b>   1 = <b>Stacking</b>	0	0	1
Ticket Mode	Ticket Mode: 0 = <b>FEC Table</b>   1 = <b>High Ticket + Min Ticket</b>   2 = <b>High Ticket and Zero Min Tickets.</b>	0	0	2
Winner Ticket	FEC Ticket Payout Option. Tickets given to the winner multiplied by players played. <b>Small Ticket only or 0 = FEC off</b>	0	0	300
Minimum Ticket	FEC Ticket Payout Option. Tickets given to the non-winning player(s). 0 = <b>FEC mode OFF</b>	1	0	25
Ticket Divider	Divides total amount of tickets given to the Winner and Non-winner.	1	1	2
Reset Defaults	Allows User to reset the board to its default settings. If need, set option to "1" and then press <b>ENTER</b>	0	0	1

## FEC Ticket Output Option Mode Only

<b>PLAYERS</b>	12	0	3	3	4	4	4
	11	0	2	3	4	4	4
	10	0	2	3	4	4	4
	9	0	2	3	3	4	4
	8	0	2	2	3	3	4
	7	0	2	2	3	3	3
	6	0	1	2	2	3	3
	5	0	1	2	2	2	2
	4	0	1	1	2	2	2
	3	0	1	1	1	2	2
	2	0	1	1	1	1	1
	1	0	0	0	0	0	0
		0	1	2	3	4	5

## GAME OPTION VALUE

### WARNING!

**DO NOT ENTER PROGRAMMING MODE UNLESS YOU ABSOLUTELY HAVE TO!**

Inadvertently, changing program settings can cause undesirable results to your game. Bob's Space Racers® Inc. has set these options to achieve the highest turn-around time and optimal game performance.

### Programming Mode

1. Locate the Master Board.

*Note: This is located on the backside of the game. It may be labeled Master, Master Board or M.*

2. Hold down the **Select** and **Enter** buttons for 4 seconds to enter program mode.

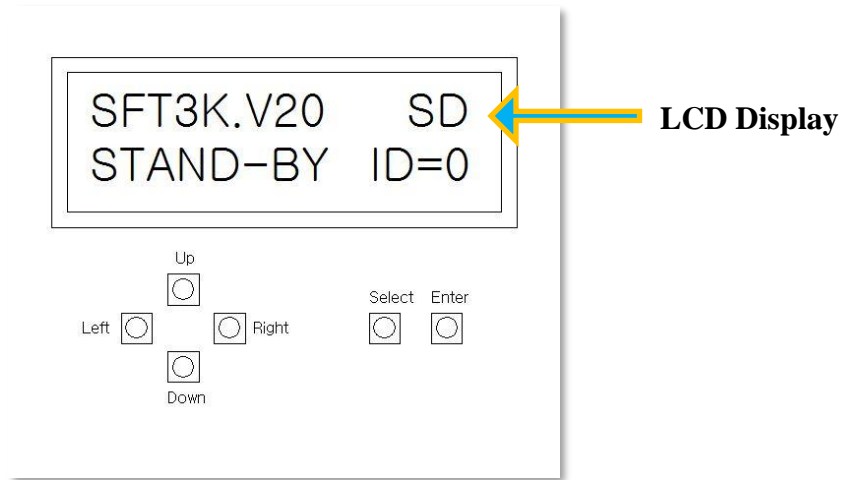
3. Press either **Up** or **Down** to scroll through the options.

4. Press either **Left** or **Right** to change the options value.

*Note: Changing the value, sets and saves the value.*

5. Press the **Select** button to exit programming mode.

*Note: While programing, the master board has a timed limit and if left idle, the master board will exit programing mode.*



For further assistance, please call Bob's Spacer Racers Technical Support at 386-677-0761 ext:146 or e-mail at [tech@bsrgames.com](mailto:tech@bsrgames.com).



# Chapter 7: Service

---

## 7.1 Calling for Service

When calling for service, please check the service manual first. You may find a solution to your problem within this manual.

Please make sure you have the serial number of the game ready when you call.

If this is a repeat call, please tell the service technician that you have made a previous call regarding this problem. This way we will be able to retrieve the history on your game allowing us to efficiently serve you better.

Please retain proof of purchase for your product. This may be requested for warranty repairs.

If at all possible, please call us from and with access to the game as we may need you to check certain things on the game while we are on call with you.

**IF YOU HAVE ANY  
QUESTIONS OR COMMENTS  
PLEASE CALL BSR.**

**BSR's Parts Contact Info**

Phone: 1-(386) 677-0761  
Opened: Monday – Friday  
Office Hours: 8:30AM – 5:00PM EST  
E-mail: Parts@bsrgames.com  
EXCLUDING HOLIDAYS

**BSR's Tech Contact Info**

Phone: 1-(386) 677-0761  
Opened: Monday – Friday  
Office Hours: 8:30AM – 5:00PM EST  
Has afterhours support, charges may apply.  
E-mail: Tech@bobsspacracers.com  
EXCLUDING HOLIDAYS

**Visit Our Website for More Information**

**WWW.BOBSSPACERACERS.COM**

**A great resource on our website is the CUSTOMER “SUPPORT” page.**



# Chapter 8: Family Entertainment Center (FEC) Options

## 8.1 FEC Options for Bob's Space Racer's Game

8.1.1 The FEC swipe card option will allow the game to be operated without an attendant. These options have a few different types of configurations. BSR will run the wires for the card swipe, but on most occasions the customer usually has their own swipe system. If the customer pre-purchases the swipe card system, BSR can install them on the game. Below *Figure 8.1* are a few styles that customers use.



Figure 8.1

9.1.2 BSR can also set up the FEC game to use coins to start the game. See *Figure 8.2*



Figure 8.2

9.1.3 FEC payout options can be a small ticket (*Figure 8.3*), or a (4 inch x 2 inch) large ticket (*Figure 8.4*). Either size tickets can be set to a specific payout, depending on the customer's needs.



Figure 8.3



Figure 8.4

# Appendix A: Policies

---

## A.1 Service Policy

A.1.1 Here at BOB'S SPACE RACERS® INC., we pride ourselves in providing the highest quality, long lasting, and easy to maintain equipment.

A.1.2 Technical Support Service hours are from 8:30 am to 5:00 pm, EST, Monday through Friday, excluding holidays. The direct technical number is (386) 677-0761 ext:146. During all other times, follow the prompts on our Automated Phone System to relay your problem to the technician on call. Technical Support will assist you in troubleshooting a service problem or setting equipment options.

A.1.3 You can also e-mail your technical question to: [tech@BobsSpaceRacers.com](mailto:tech@BobsSpaceRacers.com).

A.1.4 Customer Service hours are from 8:30 am to 5:00 pm, EST, Monday through Friday, excluding holidays. Customer Service staff can be reached at (386) 677-0761. They will also take parts orders and research the status of previous orders.

## A.2 Advance Replacement Policy

A.2.1 After speaking with our Technical Department it may be necessary for Bob's Space Racers® Inc., to ship an assembly item or part to repair your game.

*Note: We will not ship anything to P.O. Boxes via the US Postal Service. You will be billed per your account status for the total cost of the shipment, which includes shipping charges.*

A.2.2 Upon shipment of the new item(s) a Return Merchandise Authorization Number (RMA #) will be issued for you to use when returning the defective item(s) to Bob's Space Racers® Inc., or you may use the order number. After the defective item(s) is received by Bob's Space Racers® Inc. your account will be issued either a:

A.2.3 Warranty credit: if your game is under warranty. See the Warranty Policy page. *Note: this credit does not include return shipping charges.*

A.2.4 Credit for the item(s). *Note: this credit does not include return shipping charges, nor does it include the repair charges for the item(s).*

A.2.5 If the item(s) cannot be repaired to the point where it could be shipped to another customer as an Advanced Replacement item (i.e. cosmetic damage), we will ship your original item(s) back to you. You will be required to return the Advanced Replacement item(s) or pay for it. You will be responsible for all shipping charges, should you decide to not keep, and pay for, the Advanced Replacement item(s).

## Appendix B: Warranty

---

### B.1 Game Warranty

#### **BOB'S SPACE RACERS® INC. ©2017** **1 YEAR GAME WARRANTY**

**B.1.1 INCLUDED IN THIS WARRANTY** Bob's Space Racers® Inc., warrants to the original purchaser only that the equipment that is the subject of this sale conforms to its specifications, and is free from defects under normal service for one-year period from the original date of deliver. This warranty does not include any damages resulting from occurrences listed in paragraph 2 below. This warranty is not transferable under any circumstance. Any claims under this warranty must be received in writing by Bob's Space Racers® Inc. within 120-days from date of delivery. Within a reasonable time of such written notification Bob's Space Racers® Inc. will replace or repair any defective component of the equipment or part thereof which fails for reasons other than normal service, use, or wear. Bob's Space Racers® Inc. reserves the right to request dated proof of purchase by the end user (original purchaser) at any time. Light bulbs are specifically excluded from this warranty and shall be the sole responsibility of the purchaser. Bob's Space Racers® Inc., within its sole discretion, makes the final determination as to whether to repair or replace any component and whether any such repair or replacement shall be performed where the equipment is located or at its home facility in Volusia County, Florida, or another facility of its sole choice. Any and all freight charges for the purposes of repair or replacement shall be paid by the original purchaser. All defective parts shall be returned to Bob's Space Racers® Inc. if requested. Bob's Space Racers® Inc. does not warrant that the equipment will meet any original purchaser's specific requirements or that the operation of the equipment will be uninterrupted. These remedies are the original purchaser's exclusive remedies for breach of warranty.

**B.1.2 EXCLUDED BY THIS WARRANTY** Bob's Space Racers® Inc. does not warrant (a) any product, components or parts not manufactured by Bob's Space Racers® Inc.; (b) damages caused by use of the equipment for purposes other than those for which it was designed; (c) defects caused by failure to provide a suitable installation environment for the equipment; (d) damage caused by unauthorized attachments, modification, or service; damage caused by normal wear and tear or improper power supply; (f) damage caused by accident or disaster such as fires, flood, lightning, and wind; or (g) any other abuse or misuse of the equipment.

**B.1.3 EXCLUSIVE WARRANTY. THE FORGOING WARRANTY IS EXCLUSIVE AND IN LIEU OF ALL OTHER WARRANTIES OR REMEDIES, WHETHER WRITTEN, ORAL OR IMPLIED. THERE ARE NO WARRANTIES WHICH EXTEND BEYOND THE DESCRIPTION ON THE FACE HEREOF. ANY AND ALL IMPLIED WARRANTIES OF MERCHANTABILITY, FITNESS FOR A PARTICULAR PURPOSE, COURSE OF DEALING OR USAGE OF TRADE ARE HEREBY EXPRESSLY DISCLAIMED AND EXCLUDED.**

**B.1.4 REMEDIES LIMITED. UNDER NO CIRCUMSTANCES, EXCEPT TO THE EXTENT PROHIBITED BY APPLICABLE LAW, SHALL BOB'S SPACE RACERS® INC. BE LIABLE FOR ANY LOSS OR DAMAGE, DIRECT OR INDIRECT, SPECIAL INCIDENTAL OR CONSEQUENTIAL ARISING OUT OF THE USE OR INABILITY TO USE THIS EQUIPMENT INCLUDING BUT NOT LIMITED TO ANY CLAIM FOR LOSS OR PROFITS, LOSS OF SAVINGS OR REVENUE, LOSS OF USE OF THE EQUIPMENT, OR ANY ASSOCIATED EQUIPMENT, FACILITIES OR SERVICE, DOWNTIME, THE CLAIMS OR COSTS OF THIRD PARTIES INCLUDING CUSTOMERS AND INJURY TO PROPERTY.** Some states do not allow limitations on how long an implied warranty lasts or the exclusion or limitation of incidental or consequential damages, so the above limitations or exclusion may not apply to you. This warranty gives you specific legal rights, and you may also have other rights which vary from state to state.

**B.1.5 NO OTHER WARRANTIES.** Unless modified in writing and signed by both parties, this agreement is understood to be the complete and exclusive agreement between the parties, superseding all prior agreements, oral or written, and all other communications between the parties relating to the subject matter of this agreement. No employee or representative of Bob's Space Racers® Inc. or any other party is authorized to make any other warranty or to assume any other liability in connection with the sale of its equipment.

B.1.6 TIME LIMIT FOR CLAIMS. Any claim for breach of warranty or claims under this warranty must be received in writing by Bob's Space Racers® Inc. within 120-days following delivery of the equipment.

B.1.7 FUTURE CHANGES. Bob's Space Racers® Inc. reserves the right to reserve, change or modify the construction and design of its equipment or any component part or parts thereof without incurring the obligations to make such changes or modifications in present equipment.

B.1.8 ALLOCATION OF RISKS. This agreement allocates the risks of equipment failure between Bob's Space Racers® Inc. and the original purchaser. This allocation is recognized by both parties and is reflected in the price of the goods. **THE PURCHASER ACKNOWLEDGES THAT HE HAS READ THIS AGREEMENT, UNDERSTANDS IT, AND IS BOUND BY ITS TERMS.**

B.1.9 TO OBTAIN WARRANTY SERVICE. The original purchaser must, at his/her own expense, bring or ship the equipment to an authorized location for service. Additionally, the original purchaser must pay all freight, shipping or transportation charges for the return of the equipment from Bob's Space Racers® Inc. to the original purchaser.

## ***B.2 Advanced Replacement Item(s) Shipping Requirements***

*B.2.1 When you request an Advanced Replacement item from us, we recommend you to follow*

B.2.2 **DO NOT** try to repair the defective item(s) on your own; **DO NOT** disassemble the defective item(s) prior to returning it to Bob's Space Racers® Inc. – this could cause further damage and the possibility of you not receiving any credit at all on the item(s). There are no user serviceable parts contained within, and our vendors may void their warranty on disassembled parts. (Please review the last paragraph of the Advanced Replacement Policy (pg. A-1)).

B.2.3 Wait for the Advanced Replacement item(s) to arrive prior to returning the defective item(s).

B.2.4 When the new item(s) arrive, verify that it is the correct part. If it is not, please note what the differences are and contact Bob's Space Racers® Inc. at [386-677-0761](tel:386-677-0761).

B.2.5 Return the defective item(s) in the exact same packaging the Advanced Replacement item(s) came in. This insures no more damage will be done to the item(s) during the return shipping.

Thank You!

## **C. Federal Communications Commission (FCC) Statement**

---

This equipment has been tested and found to comply with limits for a Class A digital device, pursuant to part 15 of the FCC Rules. These limits designed to provide reasonable protection against harmful interference when the equipment is operated in a commercial environment. This equipment generates, uses, and can radiate frequency energy, and, if not installed and used in accordance with the instruction manual may cause harmful interference to radio communications. Operation of this equipment in a residential area is likely to cause harmful interference in which case the user will be required to correct the interference at his/her own expense.

*Note:*

*All games from Bob's Space Racers® Inc. are shipped with the same factory keys and lock sets. Bob's Space Racers® Inc. recommends changing the keys and locks on your games upon receipt.*

# Appendix D: Parts List

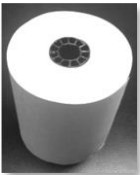

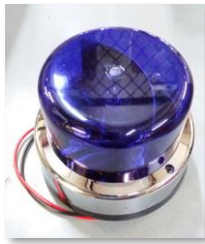

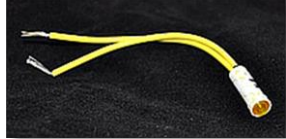
## D.1 Customer Parts List

Item #	Part #	Descriptions	Qty	Picture
1	EM080318	BOARD-ASSY BSR-3000 REV C	1	
2	M0006104	WATER GUN TIP CLEANER	1	
3	M0006103	BRASS TIPS WATER GUN (RUBBER WASHER INCLUDED)	1	
4	M0006330	BARREL GUN (NEW GUN BARRELS DO NOT USE A WASHER)	1	
5	P0009955	FILTER PVC 1 INCH CLEAR VU-FLO™ Kit	1	
6	P0009956	1 INCH CLEAR VU-FLO™ BOWL	1	
7	P0008760	O RING FILTER 1" VU-FLO (SET)	1	



8	P0008930	PLASTIC PUMP: ¾ HP		
9	P0008900	CAST IRON PUMP: 1.0 HP		
10	P0007800	WATER PRESSURE REDUCING VALVE		
11	P0801009	CANISTER: ¾ INCH X ¾ INCH WATER FILTER HOUSING		
12	P0008800	CANISTER WATER FILTER		
13	EX007650	MOTOR STEPPING ASSY-NEW VERSION	1	
14	MX005910	BOOT HURST WATER GAME 1 INCH HOLE	1	
15	M0005909	RING BOOT STAINLESS STEEL	1	
16	E0012900	SWITCH PUSHBUTTON	1	

17	E0013300	MICRO SWITCH STANDARD BZ	1	
18	M0002200	DECAL SHOOT HERE CLEAR	1	
19	ARWB2014	SENSOR MAGNETIC WIRED	1	
20	ARWB2003	SENSOR MAGNETIC MAGNET	1	
21	E0024400	FUSEPOST PANEL MOUNT	1	
22	EX033550	ACCOUNTING LCD	1	
23	E0900000	PRINTER DOT IMPACT IN GAME ACCTG	1	
24	E0900015	THERMAL PRINTER STAR MICRONICS® – PRINTING RIBBON	1	

25	E00900005	PRINTER PAPER 3" NON-THERMAL	1	
26	E0023200	TRANSFORMER 120/240 12-24 .5KVA BK/BST	1	
27	E0030635	12V BLUE DOME BEACON ASSEMBLY	1	
28	E0029105	BULB - BLUE BEACON	1	
29	E0029800	ID LIGHT 12V AMBER	1	

## Appendix E: Revision Information

---

Revision	Date of Revision	Description of Revision	Approved by
A	April 14, 2017	1.0	Jack Cook





Bob's Space Racers® Inc. ©2017  
427 15th Street,  
Daytona Beach, Florida 32117  
Phone - (386) 677-0761  
Fax - (386) 677-0794  
E-mail: [tech@bobsspacracers.com](mailto:tech@bobsspacracers.com)